

The background of the slide is a close-up photograph of green fern leaves. The leaves are densely packed and have a characteristic feathery structure. The lighting is bright, creating a vibrant green color with some highlights and shadows that give the image a sense of depth and texture.

**ENVIROMANAGE**

# **Data Management Toolkit for Carbon Forests**

**by Hugh Walcott**

Carbon Forests 2011,  
Auckland, 13-14 July 2011

“We need a user friendly data management tool to reduce the total administration cost for participants.”

Sean Weaver, Oct 2010



**Total Carbon Benefit**



# The Client

- **Western Southland – 1500 ha NZ Indigenous Forests.**
- **Pre-1990 / Voluntary Market: required a data and workflow management tool for 21 sites / projects.**
- **The challenge: How to make it simple to use and reduce total costs?**
- **Perhaps the same tool could be used for other compliance users?**



Welcome!

Enviromanage is a system for monitoring and maintaining the sustainability performance of your organisation.

Admin

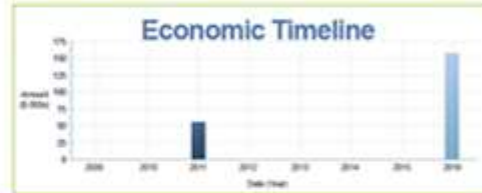
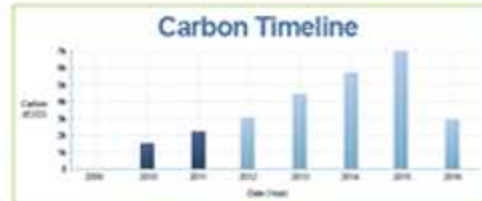
Project

Monitoring

Home

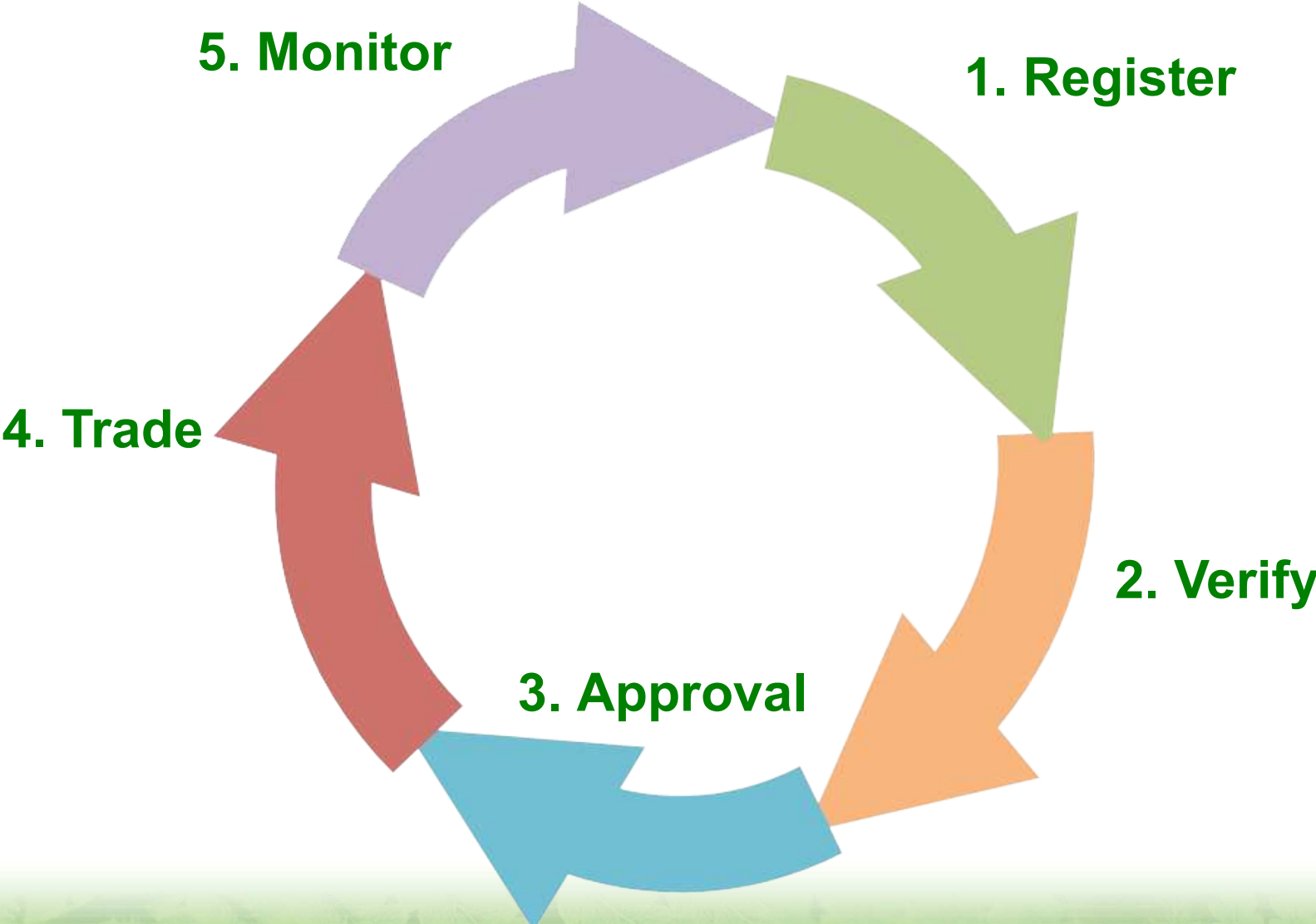


Total Carbon Benefit

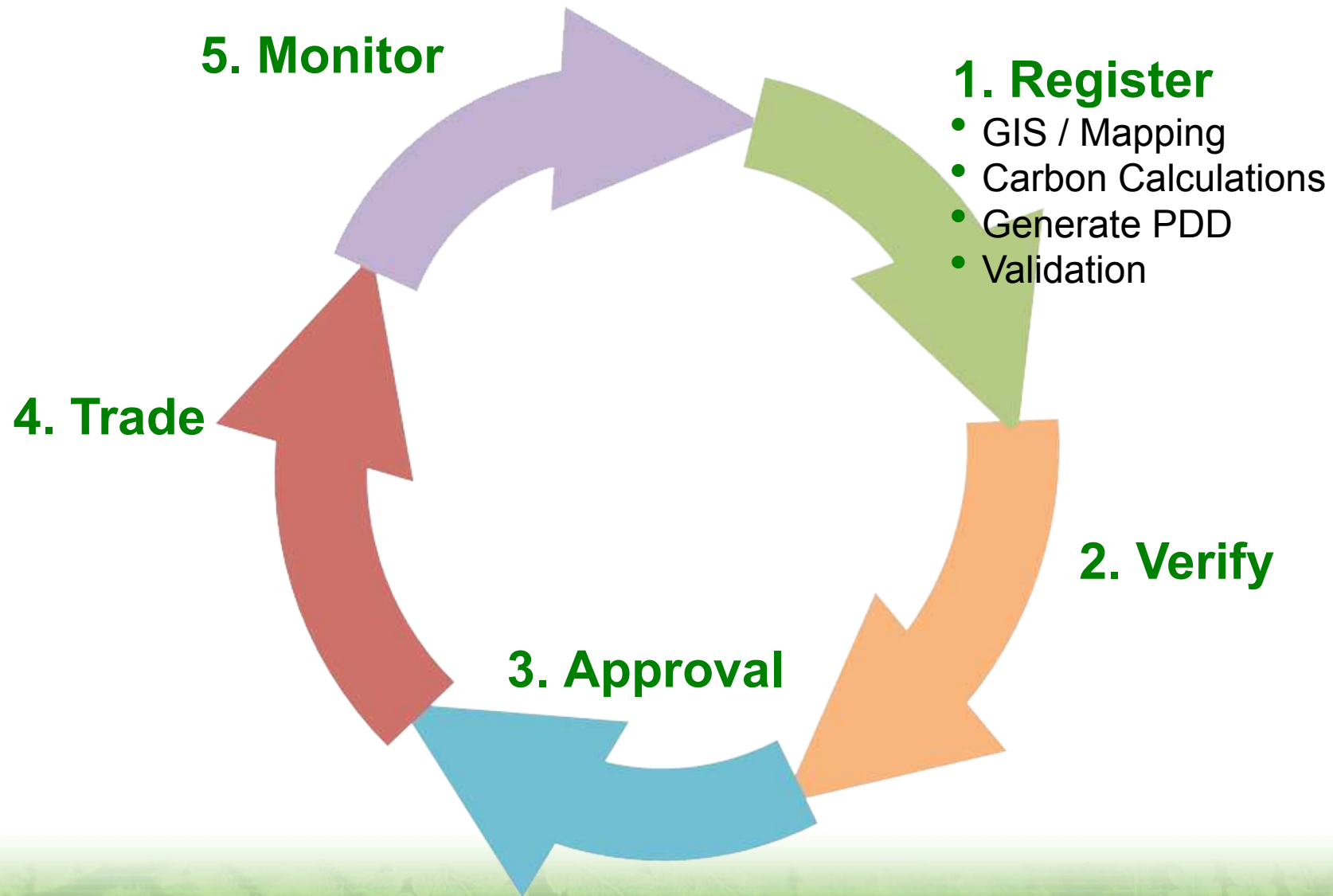


- Registration** [more](#)  
All projects have been registered successfully
- Verification** [more](#)  
All projects have been verified
- Approval** [more](#)  
All projects have been approved
- Credit Trading** [more](#)  
You have 2 projects with credit trading reports pending
- Project Monitoring** [more](#)  
You have 2 projects with pending monitoring reports.

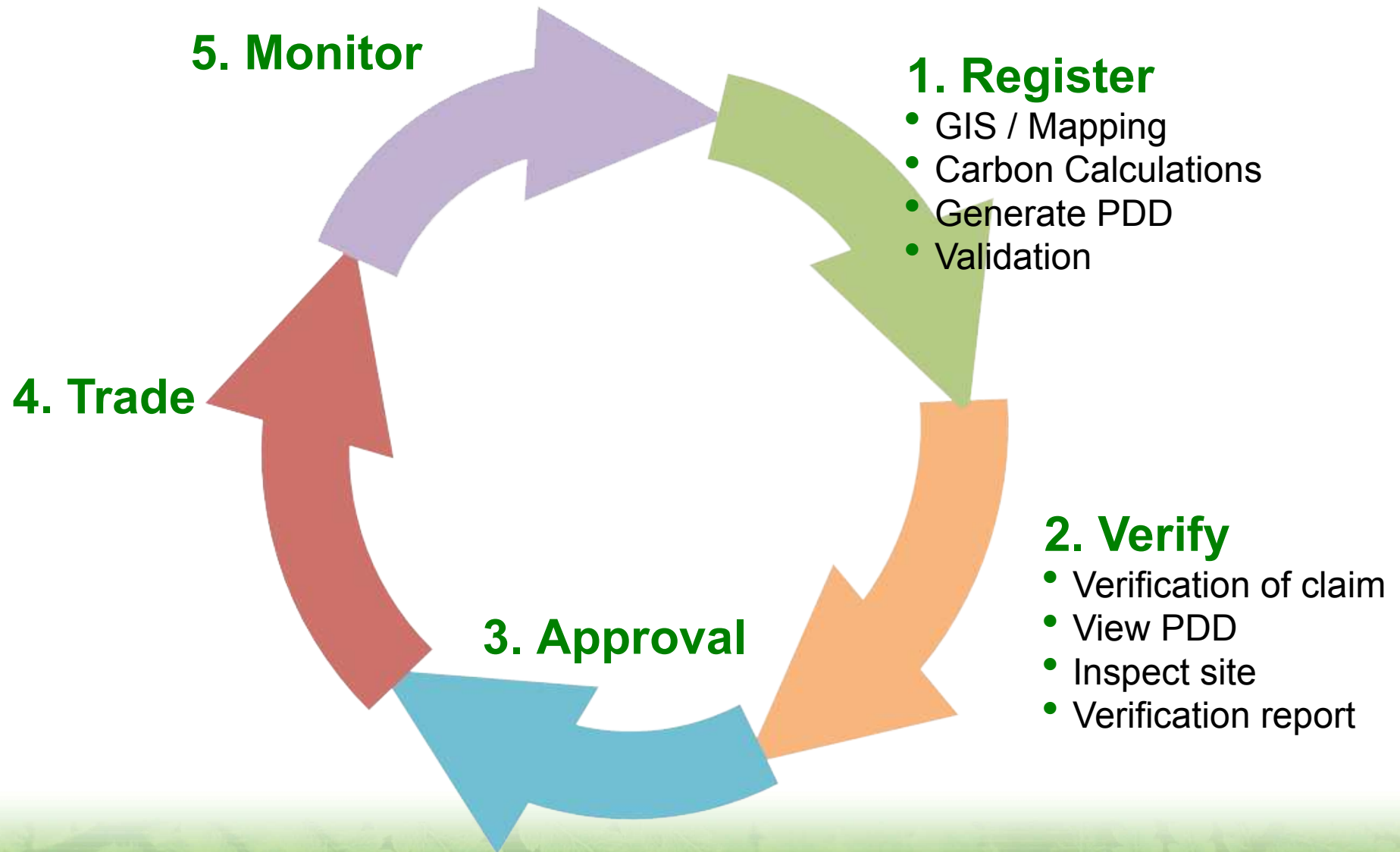
# Generic Carbon Forest Workflow



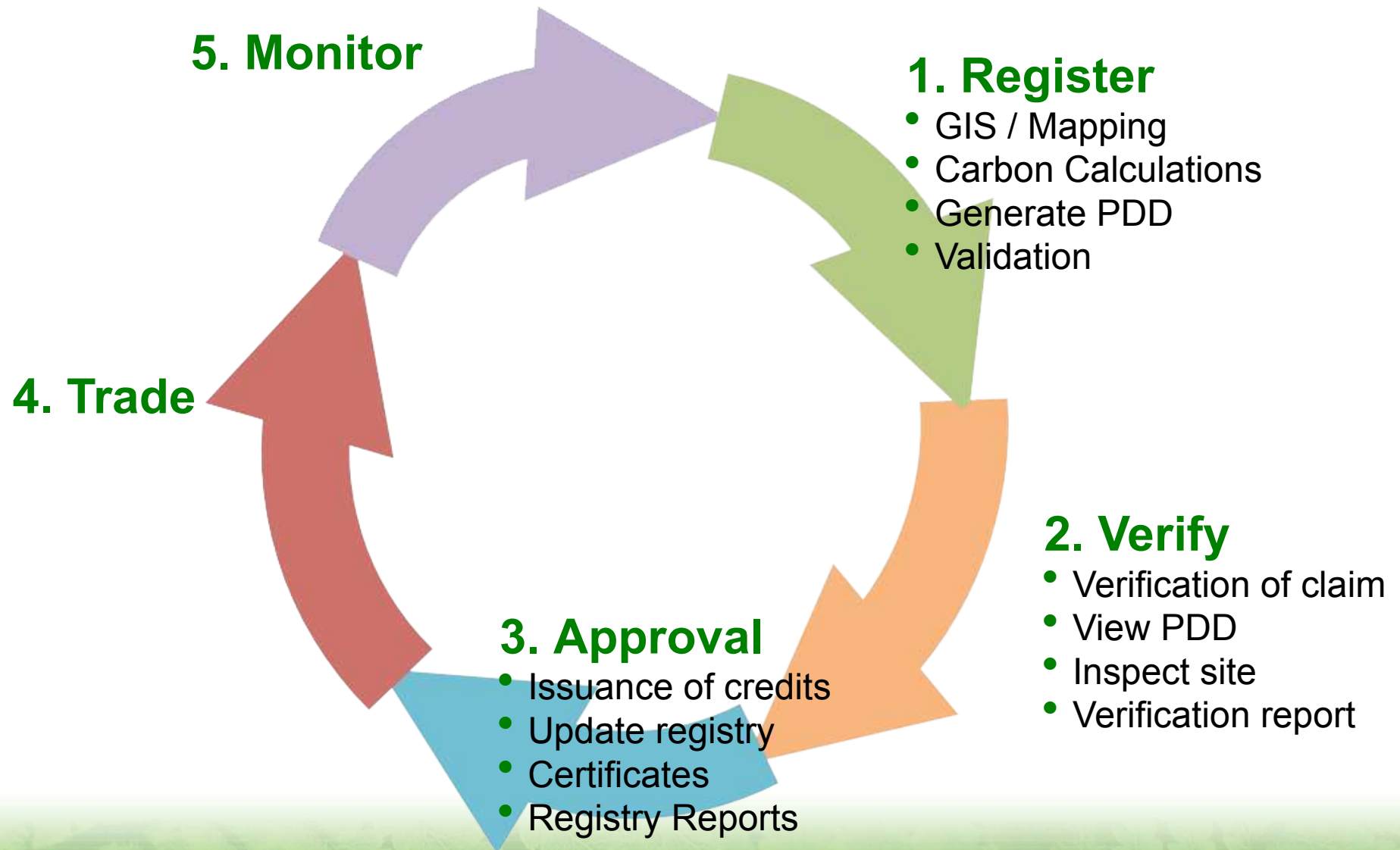
# Generic Carbon Forest Workflow



# Generic Carbon Forest Workflow



# Generic Carbon Forest Workflow



# Generic Carbon Forest Workflow

## 5. Monitor

## 1. Register

- GIS / Mapping
- Carbon Calculations
- Generate PDD
- Validation

## 4. Trade

- Marketing / promotion
- Co-benefit report
- Project briefs
- Issue formal instruction
- Update carbon balance

## 2. Verify

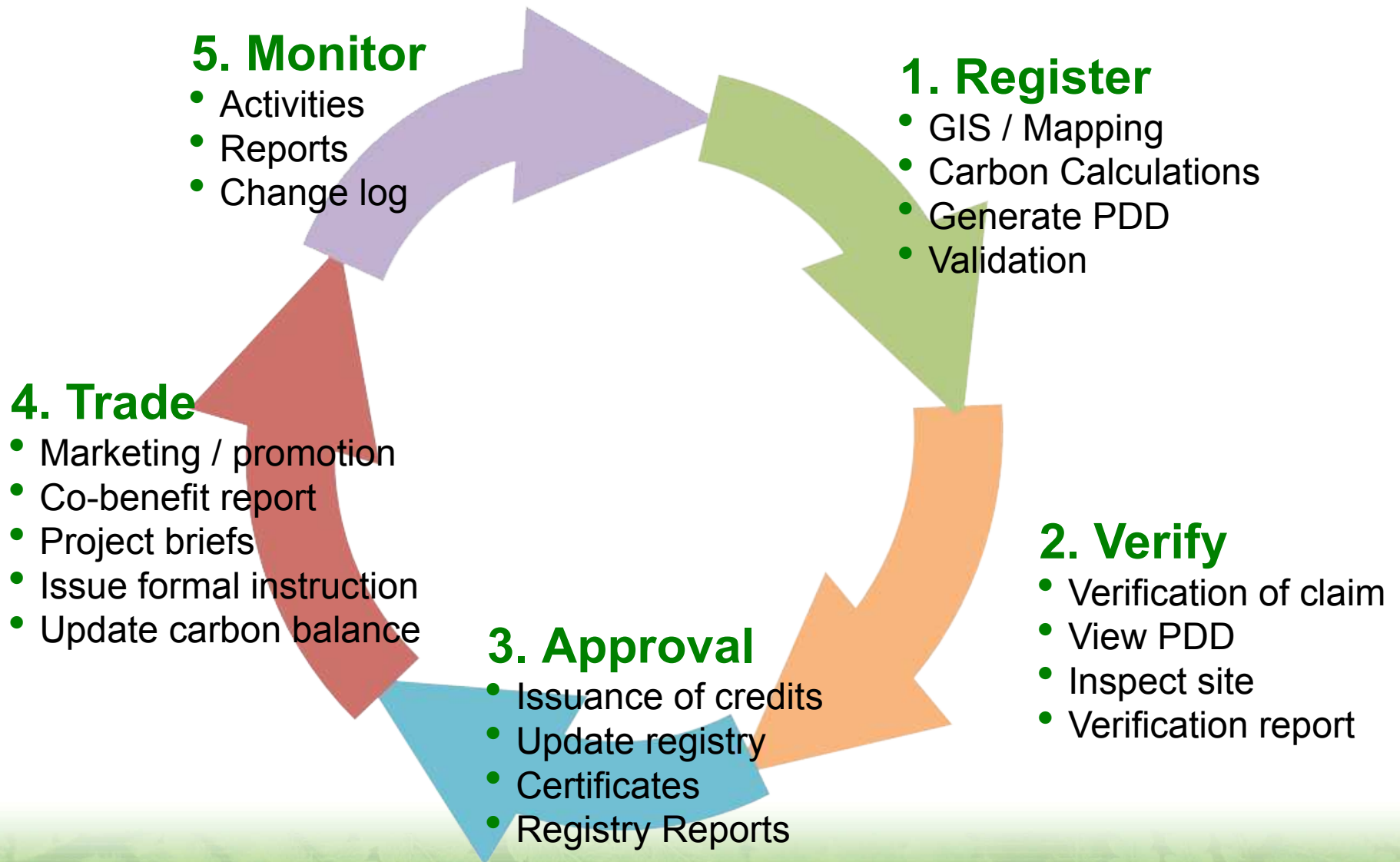
- Verification of claim
- View PDD
- Inspect site
- Verification report

## 3. Approval

- Issuance of credits
- Update registry
- Certificates
- Registry Reports



# Generic Carbon Forest Workflow



# The Problem...



# The Solution... Role Based Toolkit

**Advisor**

**Participant**

**Authority**

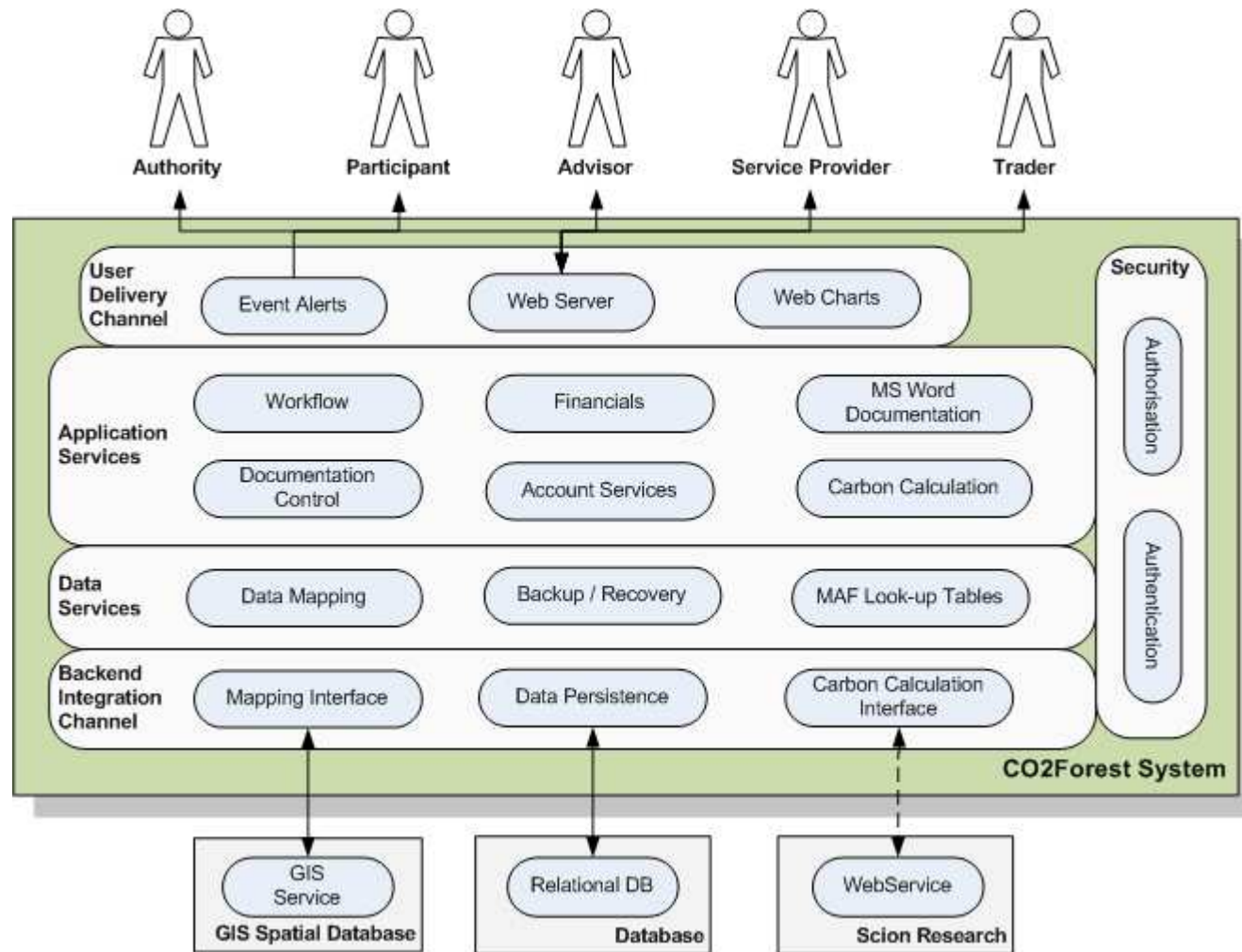


**Trading Partner**

**Service Provider**



# The Solution... Capability Map



# CO2Forest - Dashboard in Detail



## Welcome!

EnviroManage is a system for monitoring and maintaining the sustainability performance of your organisation.

Admin

Project

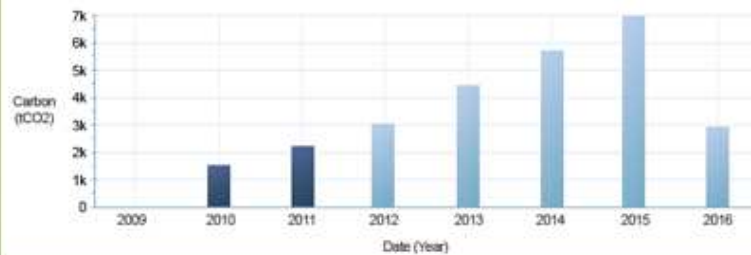
Monitoring

## Home

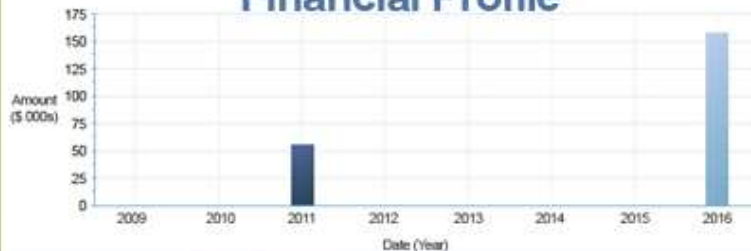


### Total Carbon Benefit

#### Carbon Profile



#### Financial Profile



#### Registration

All projects have been registered successfully

[more](#)



#### Verification

All projects have been verified

[more](#)



#### Approval

All projects have been approved

[more](#)



#### Credit Trading

You have 2 projects with credit trading reports pending

[more](#)



#### Project Monitoring

You have 2 projects with pending monitoring reports.

[more](#)

# Next Steps

- **Completion of development for Southland pilot project**
- **Looking for other NZ ETS partners**
- **Export system to developing world**

**CONTACT ME FOR A TEST DRIVE...**



# Thank you...

